

SAMPLE Jnr Cert PHYSIOLOGY SQ Answers

List **four** stages of human development.

- (i) physical, moral (ii) emotional
(iii) social, personality (iv) intellectual/mental

4

Explain **each** of the following:

- (i) **placenta** Provides oxygen and nutrients from mother to baby in the
womb. Removes harmful substances.
(ii) **menstruation** If the egg is not fertilised the lining of the womb breaks down
and is released from the body via vagina.

4

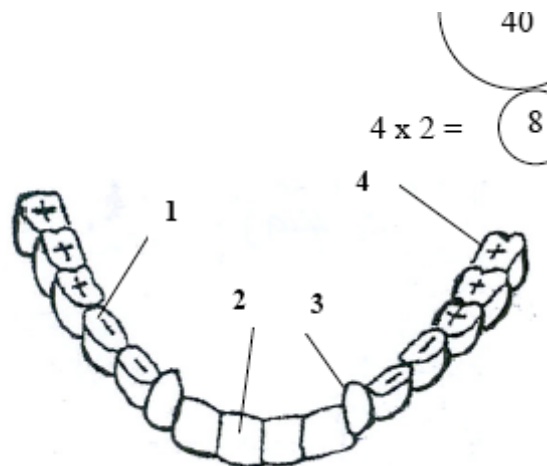
Name **four** types of permanent teeth.

- (i) Incisors (ii) Canines
(iii) Premolars (iv) Molars / Wisdom teeth

4

(a) Name the types of teeth labelled 1, 2, 3 **and** 4.

1. Premolar
2. Incisor
3. Canine
4. Molar



Choose the correct word from the following list to complete **each** of the sentences. 5 x 3 = (15)

crown root cementum enamel pulp cavity

- (i) Most of the tooth is protected by a hard substance called enamel.
- (ii) The cementum holds the tooth in place in the jaw.
- (iii) The space at the centre of the tooth is called the pulp cavity.
- (iv) The visible part of the tooth is called the crown.
- (v) The root of the tooth is embedded in the gum.

What is the advantage of using **each** of the following oral hygiene products? 4 x 2 = (8)

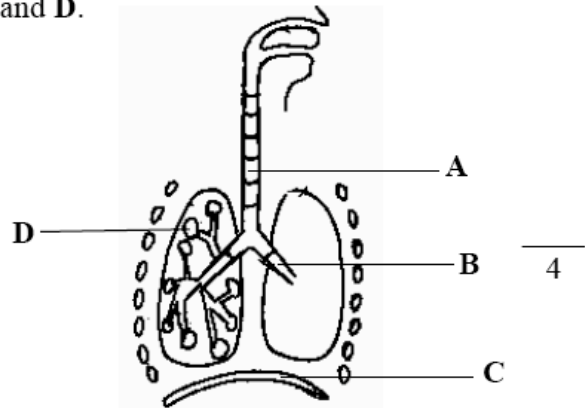
- (i) fluoride toothpaste strengthens teeth; freshens breath
- (ii) dental floss removes food particles, prevents plaque/tartar
- (iii) antiseptic mouthwash kills bacteria, freshens breath
- (iv) disclosing tablet shows areas of plaque on teeth / tartar

Name **two** dental health problems that may be the result of neglecting the teeth. 2 x 3 = (6)

- (i) Dental caries/tooth decay (ii) gum disease

Name the parts of the respiratory system labelled A, B, C and D.

- A Trachea
- B Bronchus
- C Diaphragm
- D Alveolus (air sac)



Choose the correct word from the following list to complete **each** of the sentences below. _____

5

sperm testosterone semen oestrogen

- (i) Fertilisation occurs when a sperm unites with the female egg.
- (ii) The male sex hormone is testosterone.
- (iii) A liquid called semen contains millions of sperm.

Explain **each** of the following:

(i) **controlled drugs** drugs available only with a doctor's prescription

(ii) **passive smoking** when non-smokers inhale smoke from a nearby smoker

4

Page 4 of 13

Give the function of **each** of the following:

(i) **arteries** carry blood away from the heart

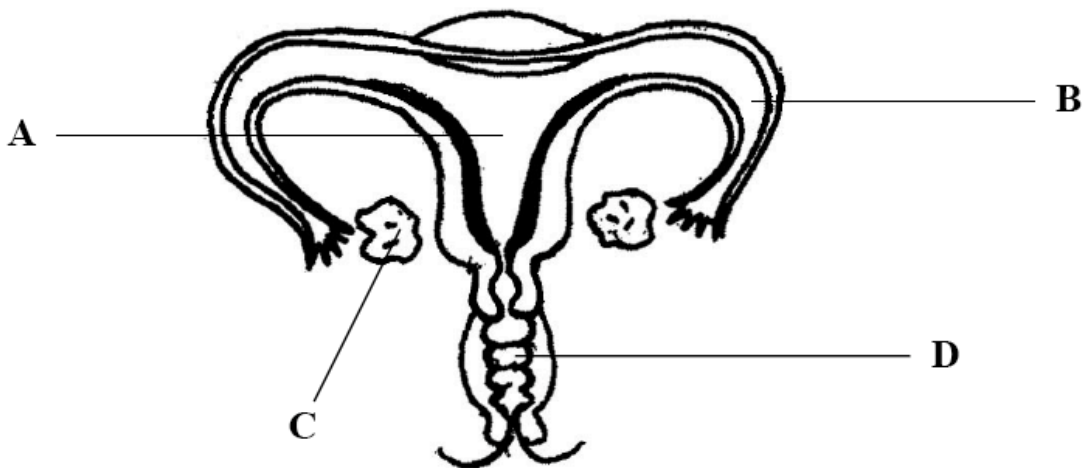
carry oxygen rich blood around the body

(ii) **haemoglobin** carries oxygen around the body in the blood, prevents anaemia

4

Name the parts of the female reproductive system labelled A, B, C and D.

4



A. Uterus/Womb

B. Fallopian tube

C. Ovary

D. Vagina

Explain **each** of the following terms in relation to the female reproductive system:

4

(i) **ovulation** An egg is released from the ovary into the fallopian tube. Occurs in the middle of the menstrual cycle / periods

(ii) **menopause** This occurs to women usually between 45 and 55 (Middle aged) when their menstrual cycles / periods cease.

Name the parts of the digestive system labelled 1, 2, 3 and 4.

1. Liver
2. Stomach
3. Large intestine
4. Anus



Give **two** functions of the lungs.

4

- (i) Take in Oxygen / Release Carbon Dioxide
- (ii) Release small amounts of water vapour

Explain why fluoride is usually added to the public water supply.

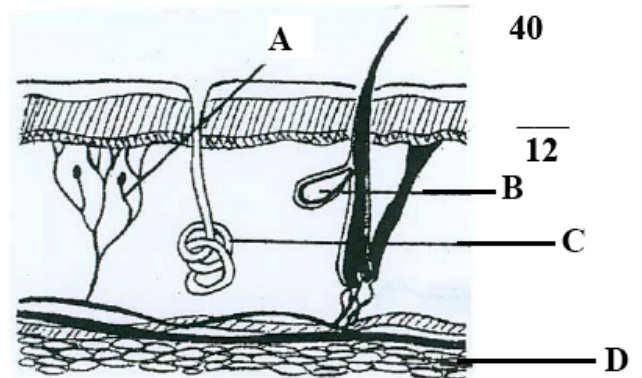
5

Helps to prevent tooth decay

Strengthens the teeth

Name the parts of the skin labelled A, B, C and D.
= 4 x 3

- A. Nerves
- B. Oil Gland
- C. Sweat Gland
- D. Layer of fat cells



40

12

Choose the correct word from the following list to complete **each** of the sentences.

= 5 x 2

blood vessels **nerves** **sweat glands** **oil glands** **fat cells**

- (i) The nerves allow us to feel sensations, for example heat.
- (ii) The blood vessels supply the skin with oxygen and nutrients.
- (iii) The oil glands produce a substance which moistens the skin.
- (iv) The fat cells help to insulate the body.
- (v) The sweat glands remove waste from the body through the pores.

How can over exposure to the sun damage a person's skin?

9

= 1 x 3

Can cause skin cancer (Melanoma) / premature ageing / wrinkles

Sunburn

Give **two** guidelines which should be followed when sunbathing.

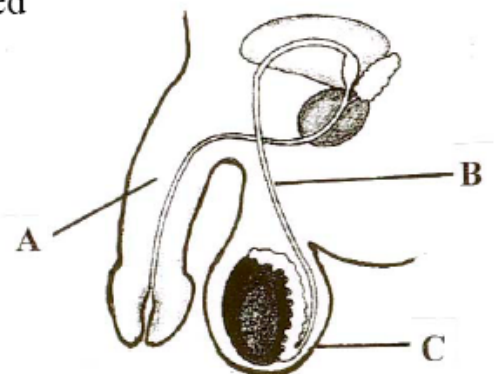
= 2 x 3

(i) Use high protection sun screen / Wear a sun hat

(ii) Stay out of sun between 12 noon and 3 pm / Don't fall asleep

Identify the parts of the male reproductive system labelled A, B and C.

- A Penis
- B Sperm duct
- C Testicle



Give **two** functions of the skin.

4

(i) acts as a protective layer between the body and outside, excretory organ

(ii) temperature control, organ of touch, manufacture Vit. D